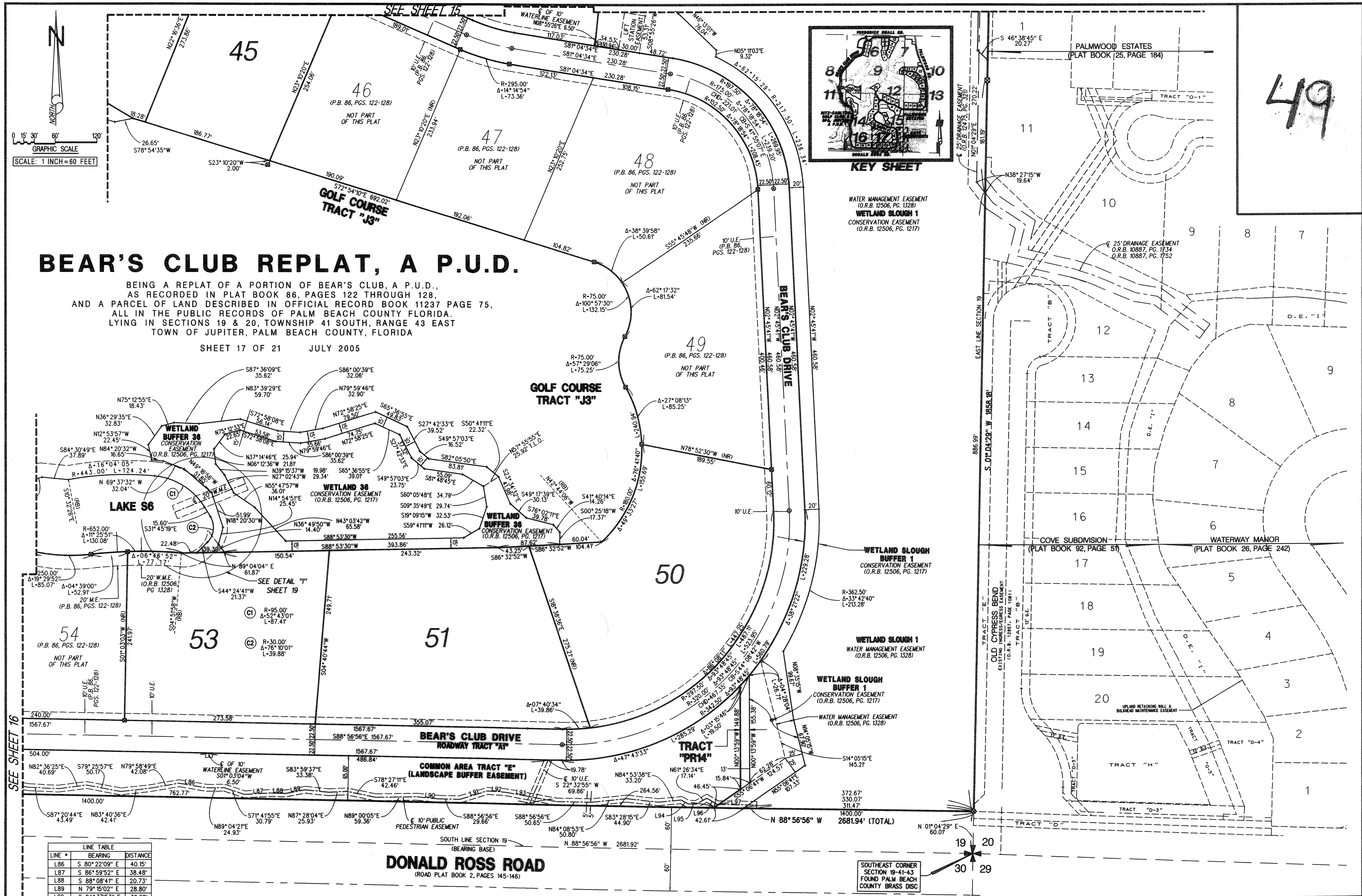


49



# BEAR'S CLUB REPLAT, A P.U.D.

BEING A REPLAT OF A PORTION OF BEAR'S CLUB, A P.U.D., AS RECORDED IN PLAT BOOK 86, PAGES 122 THROUGH 128, AND A PARCEL OF LAND DESCRIBED IN OFFICIAL RECORD BOOK 11237 PAGE 75, ALL IN THE PUBLIC RECORDS OF PALM BEACH COUNTY FLORIDA, LYING IN SECTIONS 19 & 20, TOWNSHIP 41 SOUTH, RANGE 43 EAST TOWN OF JUPITER, PALM BEACH COUNTY, FLORIDA

SHEET 17 OF 21 JULY 2005

LINE #	BEARING	DISTANCE
L86	S 80° 22' 09" E	40.15'
L87	S 86° 59' 52" E	38.48'
L88	S 88° 08' 41" E	20.73'
L89	N 79° 15' 02" E	28.80'
L90	S 84° 37' 53" E	32.28'
L91	N 73° 07' 43" E	41.56'
L94	S 60° 47' 38" E	11.40'
L95	S 88° 56' 56" E	11.66'
L96	S 59° 08' 30" E	17.04'
L97	S 88° 56' 56" E	57.05'

## DONALD ROSS ROAD

(ROAD PLAT BOOK 2, PAGES 145-146)

**LIDBERG LAND SURVEYING, INC.**  
 675 West Indiantown Road, Suite 200,  
 Jupiter, Florida 33458 TEL. 561-746-9454

CAD.	K\ UST \ 194143 \ BEARCLUB \ 2090306 \ SHEET16.DGN				
REF.	K\ UST \ 194143 \ BEARCLUB \ 2090306 \ 2090306.DGN				
FLD.	B.D.	FB.	PG.	JOB	00-209-306
OFF.	R.W. & E.C.			DATE	JUNE 2005
CKD.	D.C.L.	SHEET	17 OF 21	DWG.	DOO-209P